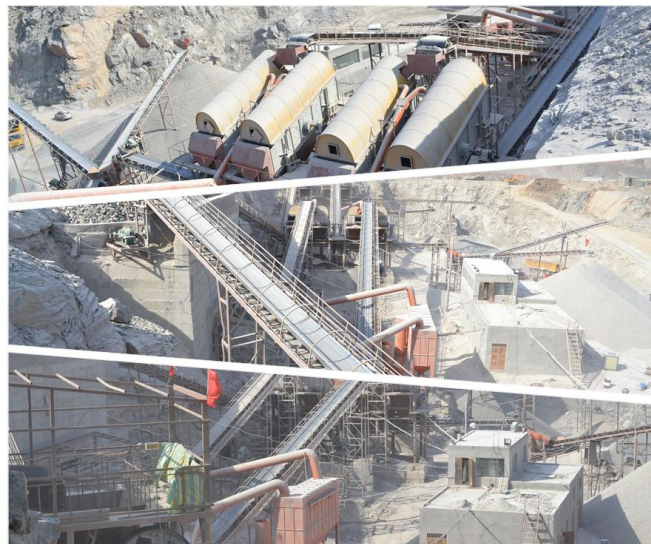


DSMAC won the 800TPH limestone crushing line order in Russia of the Year

DSMAC has won to be the large limestone crushing line supplier for one famous quarry in Russia, and the complete value of the order is approximately 600,000 dollars. This is the third big deal that DSMAC has got in Russia since 2006, including granite mobile crushing and screening plant, roller press, backed by strong company strength.

DSMAC will supply the complete 800TPH [limestone production line](#) for one big quarry in Kolomna District, Moscow region, Russia. With high competition with other ten companies, DSMAC has successfully stood out after the customer six hours' visit to the factory and carefully consideration for nearly one month. It represents the high recognition of DSMAC crushing and screening equipment in Russia.



DSMAC especially value the order in Russia for it will offer great help for DSMAC to open the market of quarry stone crushing and do it as an established case of large crushing line for Russia customers. Lu Hongbo, DSMAC senior manager said, "Russia is a very important market for us, and we want to be part of the future development of the fast growing construction market. We judge this project as a significant contract of an attractive, growing market area. With extensive product range and high technology of stone crushing equipment, we can meet the requirement of customers."

DSMAC has successfully constructed its 50TPH granite [crushing and screening plant](#) and several other small-scale stone production plants in Russia in 2012, and this left good impression in Russia quarry for the high technology and good service DSMAC created. And this huge-scale limestone crushing line will show off the company strength and lay



good foundation for DSMAC to expand their brand to the whole Russia and even to the whole European.

Analysis of Large-scale limestone production line

DSMAC PE1200*1500 jaw crusher and PYS-B1626 cone crusher are the key crushing equipment in the 800TPH limestone production line. The PE1200*1500 jaw crusher has large crushing capacity which can range from 400-800TPH, and it is an ideal coarse crushing equipment in stone production line. The [PYS cone crusher](#) is a new type spring cone crusher and performs well in production capacity, finished product size and shape, weight, maintenance and operation.

According to the customer, the feeding size is required to be 1000mm, and the final size needs to be as following: 0-5mm, 5-20mm, 20-40mm, 40-70mm. DSMAC especially designed the process to meet the customer requirement and maximize the benefit.

On the quarry, the limestone will be transferred to PE1200*1500 for the primary crush by using DSMAC BW1500*800 apron feeder, and then to PYS-B1626 for the secondary crush. 4YK2460 and YK2865 circular vibrating screen will be used to grade and screen the crushed material according to the customer's requirement. Four belt conveyors are used to convey the crushed material to the proper places, with dimensions include B1400*50m, B1000*31m, B800*20m, B800*37m.

DSMAC BW apron feeder is professionally designed for heavy-duty operation. It is mainly used for conveying primary crushing material like limestone, for small and medium-sized cement plant. The belt conveyor is especially lengthened according to the customer requirement.

The total payment is based on the EXW Zhengzhou. The delivery also includes on-site supervisory services for the installation and commissioning, and on-site training for operating personnel. The equipment deliveries will be completed in May 2013.

ABOUT DSMAC

DSMAC is a top manufacturer of crushing, feeding and screening equipment, who owns 128,000 square meters factory space that is equipped with CNC machines, spectrometers, welding machines imported from Germany. DSMAC is especially famous domestically for its wear-resistant part, that is well known for its high-quality, long service-life and good service. There is also a team of professional engineer passionately committed to bringing leading edge design technology coupled with a proactive philosophy on customer service and support.

More information about DSMAC is available at <http://www.dscrusher.com/>.

DSMAC Group



Media Report

DSMAC
DINGSHENG MACHINERY

Lerry Liu, Chief Marketing Officers

Phone: +86-371-6789-7681

E-mail: dsmaccrusher@gmail.com

Skype: dsmac1997

MSN: dscrusher@hotmail.com